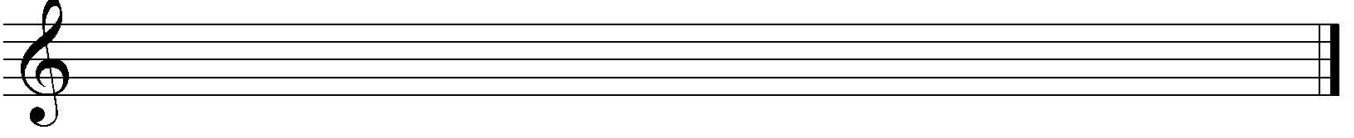


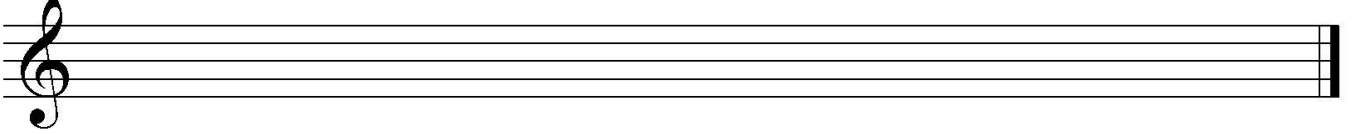
TEORİ BİLGİSİ

1. Gamları yazın.

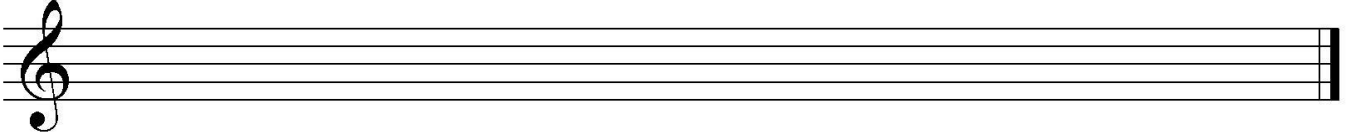
Do Majör



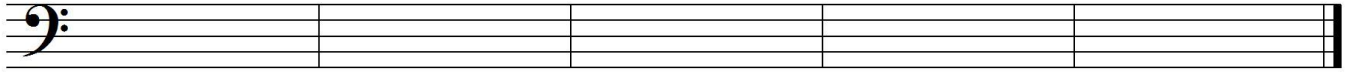
Fa Majör



Sol Majör



2. Fa anahtarında nota yazın.



Fa birlik

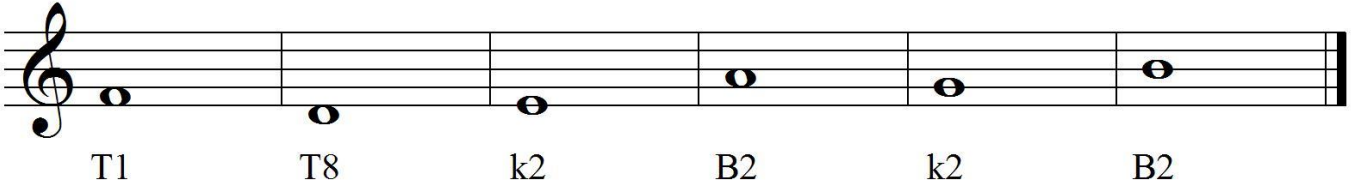
Re ikilik

Sol birlik

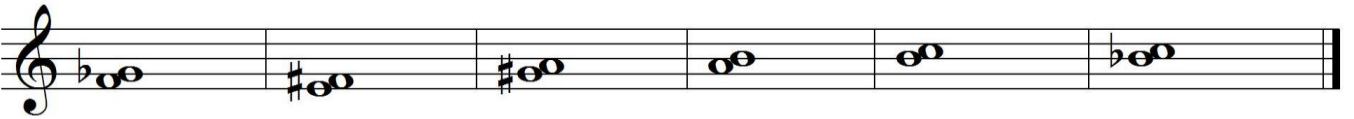
tiz Do dördlük

Mi noktalı ikilik

3. Aralıkları kurunuz (HEPSİ YUKARI).



4. Yarım sesleri YS, tam sesleri TS ile tanımlayın.



5. Aşağıdaki terimler tablosunu tamamlayınız.

	No	İtalyanca	Türkçe
TEMPOLAR	1.	Grave	
	2.	Largo	
	3.	Larghetto	
	4.	Lento	
	5.	Adagio	
	6.	Andante	
	7.	Moderato	
	8.	Allegro	
	9.	Presto	
	10.	Prestissimo	
TEMPO DEĞİŞİMLERİ	11.	Accelerando	
	12.	Fermata	
	13.	Rallentando	
	14.	Ritardando	
	15.	Ritenuto	
	16.	Tempo Primo/A Tempo	
DİNAMİKLER	17.	Pianissimo	
	18.	Piano	
	19.	Mezzo Piano	
	20.	Mezzo Forte	
	21.	(S)Forzando/(S)Forzato	
	22.	Forte	
	23.	Fortissimo	
DİNAMİK DEĞİŞİMLERİ	24.	Crescendo	
	25.	Decrescendo	
	26.	Diminuendo	
DOKUNUŞ	27.	Legato	
	28.	Staccato	
	29.	Vibrato	
	30.	Accento	
	31.	Pedale	

DUYUŞ - DİKTE

1. Duyuş (T1, k2, B2, T8).

1)	2)	3)	4)	5)	6)	7)	8)	9)	10)
B2	K2	T1	K2	T8	K2	B2	T1	B2	K2

2. Dikte.

N.-Gallon, 200 dikte, 1. dizi, No.1 (uygulama)

The image shows four staves of musical notation in 4/4 time. The first staff starts with a treble clef and a 4/4 time signature. The notes are: quarter note G4, quarter note A4, quarter note B4, quarter note C5, quarter note B4, quarter note A4, quarter note G4, quarter note F4, quarter note E4, quarter note D4. The second staff continues with: quarter note C4, quarter note B3, quarter note A3, quarter note G3, quarter note F3, quarter note E3, quarter note D3, quarter note C3. The third staff continues with: quarter note B2, quarter note A2, quarter note G2, quarter note F2, quarter note E2, quarter note D2, quarter note C2, quarter note B1. The fourth staff continues with: quarter note A1, quarter note G1, quarter note F1, quarter note E1, quarter note D1, quarter note C1, quarter note B0, quarter note A0. The piece ends with a double bar line.

